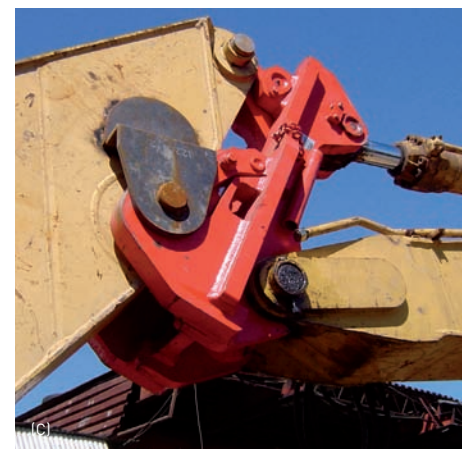


Boom Hitch

→ **UTILISE A SINGLE EXCAVATOR** COUPLED WITH A BOOM HITCH TO RUN BOTH SECOND MEMBER SHEARS AND STICK MOUNTED BUCKET LINKAGE.



ADVANTAGES

Versatile: Utilise a single excavator coupled with the A-Ward Boom Hitch. Change between second member hydraulic attachments and standard excavator stick in minutes with no auxiliary machinery or manpower. Avoid the expense of two excavators with different attachments, when one excavator can be fitted with an A-Ward Boom Hitch and utilised for both attachments.

Safe: A-Ward's Boom Hitch meets the most stringent safety standards, with four safety locks. The special hydraulic cylinder is fitted with a pressure safety locking check valve as well as a secondary

back-up manual safety cross pin, which is fitted to hold the mechanical linkage arm in the locked position; as well as two mechanical locks for each side of the main attachment pin, making this connection completely safe.

High Load: Designed to be used with both mechanical and heavy hydraulic attachments.

Easy Larger Machine Transport: With quick excavator stick removal, the boom can be lowered to fit under the required travel height and transport weight is also reduced. No longer is it a full days work to move large excavators when using A-Ward Boom Hitch.

Tough: High tensile inter meshing steel construction and anti-twisting design as has been used in the toughest quarry, recycling and demolition applications for over 5 years.

IMAGES: (A) Boom Hitch connected to a standard excavator stick and Re-bar Shear; (B) Boom Hitch connected to a PS3000 Power Shear (C) Boom Hitch connected to a Excavator Stick.